



Smart, safe and accurate.





AS LEADERS IN MANUFACTURING INDUSTRY,

Capital has set the bar with its unwavering commitment to quality and exceptional client service. Through our extensive inventory of diverse and customizable products, our talented team goes above and beyond to make sure your needs are met, and expectations exceeded.

COMMERCIAL DIAPHRAGM METERS

CIPL commercial series (G6, G10, G16 and G25) of diaphragm gas meters are positive displacement gas meters, which are widely used for accumulative measurement of natural gas, liquefied gas, city pipeline gas etc. Recommended working pressure 0.5~10kPa, the pressure tightness of the whole machine can reach more than 50kPa.

HIGH MEASUREMENT ACCURACY

The accuracy standard applied is higher than national standard and reaches Class 1.0 level,

STABLE PERFORMANCE

The unique structural design makes that the products have no obvious attenuation of metering stability in long-term operation and have long service life.

LOW PRESSURE ABSORPTION

The product's low pressure absorption is achieved by optimizing the fitting clearance and flow channel of parts, and adopting high-quality dynamic sealing materials.

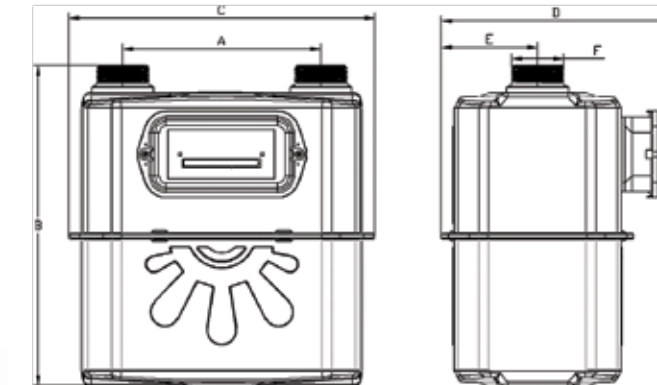
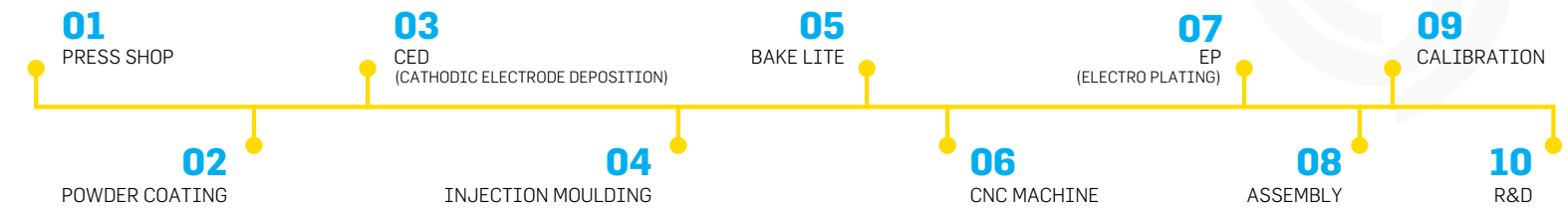
SAFETY AND RELIABILITY

The gas meter adopts a closed magnetic transmission output structure, which eliminates the fatigue wear leakage of the dynamic rubber sealing ring, and the cold-rolled steel shell package has good pressure resistance.

GOOD CORROSION RESISTANCE

The shell is made of high-quality galvanized steel plate, the internal metal parts are made of aviation antirust aluminum or stainless steel, the rubber parts are made of modified nitrile rubber with unique formula, and the diaphragm capsule is made of high-quality engineering plastics. Both parts and the whole meter have excellent corrosion resistance.

MODEL SIZE	CENTER DISTANCE A (MM)	HEIGHT B (MM)	WIDTH C (MM)	THICKNESS D (MM)	BACK MARGIN E (MM)	JOINT THREAD F	WEIGHT (KG)
G6	160	259	248	185	78	G1½	4
G10	200	327	316	215	96	G2	8
G16	240	375	355	237	107	G3	10
G25	300	437	440	285	132	M80*3	15.5



NO.	ITEMS	UNIT	SPECIFICATIONS AND PARAMETERS			
			G6	G10	G16	G25
1	Nominal flow	m³/h	6	10	16	25
2	Maximum flow qmax	m³/h	10	16	25	40
3	Minimum flow qmin	m³/h	0.06	0.1	0.16	0.25
4	Transitional flow qt	m³/h	1	1.6	2.5	4
5	Ambient temperature tm	°C	-20 ~+55			
6	Storage temperature	°C	-25 ~+60			
7	Maximum working pressure pmax	kPa	50			
8	Indication error	%	qt≤q≤qmax:±1.2 ; qmin ≤q<qt:±2.5			
9	Pressure absorption	Pa	≤200	≤300		
10	Cyclic volume Vc	dm³	2.5	5	8	15
11	Maximum degree	m³	99999.999	999999.99		
12	Minimum scale value	dm³	0.2	2		

APPROVALS



ISO 9001

EN 1359

ISO 14001

ISO 27001

MID - B

MID - D